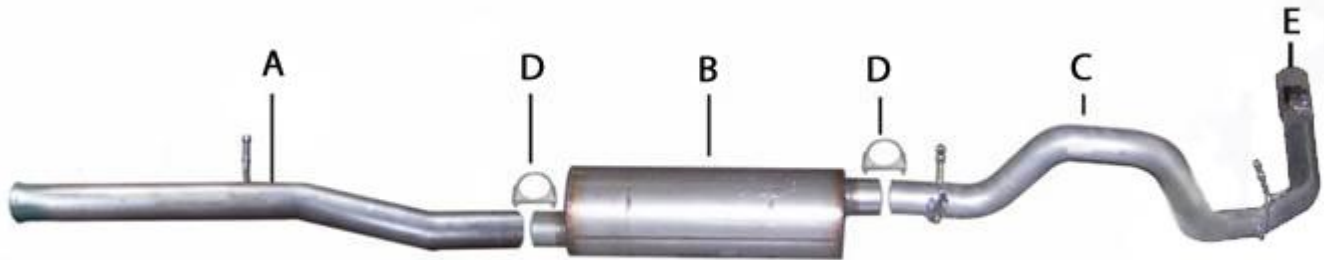




Installation Instructions

Cat-Back Stainless Single Exhaust
Chevy/ GMC 1500 Truck
Crew Cab, Short Bed 6.2L 2WD

Part #615622



ITEM	PART	QUANTITY	DESCRIPTION
A	1384-701128S	1	3 1/2 " Stainless Headpipe w/ welded flange
B	11244S	1	Superflow Stainless Muffler
C	1388-701129S	1	3 1/2" Stainless tailpipe w/ welded hangers
D	4170	2	3 1/2 " clamp
E	500380	1	4" stainless tip

2011 MODELS WILL ONLY FIT WITH A 2 BOLT FLANGE TO CONVERTER

Thank you for purchasing our Gibson Exhaust System for your vehicle.
If you need further assistance, please do not hesitate to call our technical department at
(800) 528 -3044 Monday through Friday, 8am to 5 pm.

Installation Instructions #615622

When installing this exhaust system make sure to use proper safety precautions. Use jack stands when working under the vehicle, set parking brake, block tires and use safety glasses and gloves. Allow exhaust to cool before attempting installation. Severe injury or burns could occur if safety measures are not taken.

SUGGESTED TOOLS: 1/2", 9/16", 15mm wrenches & sockets, WD-40, hacksaw, jack stands

1. Disconnect the negative battery cable before removal of OEM exhaust. This will allow the computer to reset and recognize the new exhaust. Lay out the exhaust on the floor so it looks like the drawing and compare parts with manual.



2. To remove stock exhaust, un-bolt it from the flange behind the Y-pipe. Make sure to leave all rubber grommets in the factory location. You will re-use stock clamp. For easier removal of exhaust, cut behind the muffler. Use WD-40 to remove hangers from grommets.



5. Install the over axle tailpipe #C onto the outlet of the muffler 1.5"-2" using clamp #E to secure pipe to muffler. Insert welded hanger into rubber grommet.



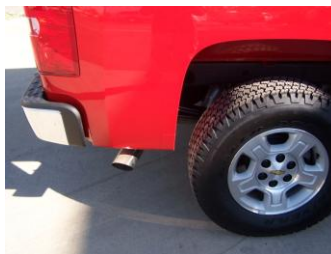
6. Slide exit pipe #D onto over axle tailpipe using clamp #E to secure. Rotate exit pipe until it is at the correct angle for your truck. Insert welded hanger into rubber grommet.



3. Next, install headpipe #A onto flange. Insert welded hanger into the rubber grommet. You will re-use your stock nuts.



4. Slide the muffler #B into the headpipe at least 1.5"-2". Use a jack stand to support the muffler. Use clamp #E to secure muffler assembly to the headpipe. The outlet of the muffler will be at approximately 11 o'clock. The muffler inlet is looking into the louvers. Do not tighten.



8. Install stainless steel tip. Clamp down. When you have everything in place, firmly tighten all bolts and clamps down securely. Use stainless steel or aluminum cleaner to polish tips. Inspect all fasteners after 25-50 miles of operation and re-tighten as necessary.

GIBSON EXHAUST systems are designed on a factory stock vehicle

Any aftermarket products installed could increase the sound levels of the exhaust.

Make sure there is a 1" clearance from ALL rubber brake lines, shock boots, lines, tires, etc. to prevent heat related damage or fire.